

Offaly Traveller Movement

ANNUAL REPORT 2013



Message from the Chairperson

The year 2013 was a busy year for the organisation; the results of our restructuring over the previous two years became evident with more and more Travellers across the county engaging with our staff and programmes. With this we have had to struggle with another year of severe cuts to our budgets and funding. Most notably a 9% cut to LCDP funding, 5% cut to HSE funding and 10% cut to Youth funding. This has been very challenging for the Movement in light of the growing need of the Traveller community in Offaly. Indeed on a wider level the disinvestment by the Irish state in the Traveller community nationally was highlighted in the publication of the *Travelling with Austerity Report*, (Pavee Point, 2013) which outlines across almost all sectors a disproportionate reduction and cut in resources that no other section in society has experienced to the same level. But perhaps our biggest challenge in our 29 year history has begun with the passing of the Local Government Reform Bill in early 2013. This has reason for grave concern for OTM and its ability to remain an independent, autonomous organisation. OTM are working with the National Traveller Partnership (NTP) in highlighting these concerns to the Irish government. Despite this increasingly difficult environment our staff have worked tirelessly and on behalf of the Traveller community in Offaly I would like to commend their hard work, commitment and loyalty.

A very special thank you to Emma Gilchreest, the OTM Director, for her dedication and leadership and for ensuring the core values and mission of the organisation is central to everything we do.

I would like to thank you, our Board, our staff, ITM and the local Traveller community, for your ongoing support during what was a very busy and invigorating year for OTM. As we continue to strive to ensure equality and social justice for the Traveller community in Offaly, we hope that the Irish government will protect our right to be an independent organisation so that we can continue to ensure that OTM is Traveller-led in a very real way.

Maureen Ward (OTM Chairperson)



Maureen Ward (front row second from left) representing the Irish Traveller community at the European Anti Poverty Network (EAPN) People experiencing poverty 12th annual conference in Brussels June 2013

Contents

	Page No
Introduction	4
OTM Consultation and Strategic Plan	5
Priority Work Areas	
i) Accommodation	6
ii) Health	7-10
iii) OTM Horse Project	11
iv) OTM Enterprise Group	12
v) Education & Youth Work	13-14
vi) Discrimination	15
vii) Culture & Ethnicity	16
Staffing	17
Board of Management and Sub Groups	18
Organisational Chart	18
Representation & Networking	19
Financial Report	20-21

Introduction

The Tullamore Traveller Movement Ltd was launched in 1996 as a response to the needs of the local Traveller community. We have since become the Offaly Traveller Movement (OTM) and continue to work for Traveller rights and social justice throughout the county. We are a non-governmental, not for profit community development organisation offering programmes responding to health, accommodation, youth, education, enterprise and human rights.

Vision

The vision of OTM is full equality and social justice for Travellers in County Offaly

Mission

The mission of OTM is to empower Travellers and to work as a partnership between Travellers and settled people to achieve equality and social justice for Travellers in County Offaly.

Principles, Values and Commitments

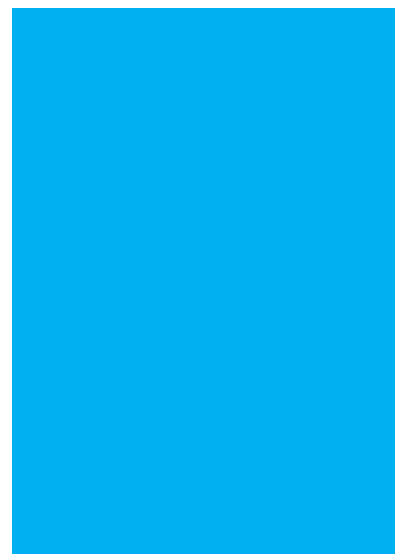
OTM believes in:

Travellers as a nomadic ethnic group
 Equality
 Social Justice

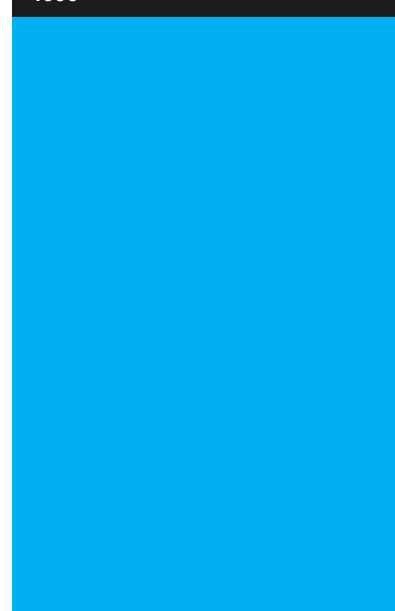
OTM is committed to:

Human Rights
 Community Development
 Empowerment
 Participation
 Partnership

The OTM Annual report shares a flavour for our work throughout the year, for much more information please visit our website on www.otm.ie



Mary Robinson launching the Tullamore Traveller Movement in 1996



In 2012, OTM Board of Management identified the need to develop a strategic approach to the future development of the organisation. As part of the process of developing the plan, a significant consultation process was carried out with members of the Traveller community and with other stakeholders in Offaly. The results of this process provided the framework that underpinned the strategic planning process and influenced the Strategic Areas of Work that have been prioritised for the period of the current Strategic Plan (June 2012-June 2015)*

*OTM Consultation Report and OTM Strategic Plan available on OTM website www.otm.ie

Community Consultation & Strategic Planning Process

It was important for OTM to engage with the Traveller community and to ensure they were the primary group consulted for the Strategic Plan, and many welcomed and were pleased to be involved. It is also important that the views of other stakeholders were gathered.

However, it is also essential to take account of the fact that cuts to organisations in the community sector over the past number of years have been significant and OTM, like the majority of community organisations, is operating under a reduced level of resources. In addition, the implementation of the Local and Community Development Programme determines that the work of OTM may be more programme-driven than work under previous programmes and this may reduce the capacity of OTM to respond appropriately in some instances.

In terms of issues and priorities, it is clear from the consultation process that accommodation is the largest single issue currently affecting Travellers in Offaly. The impacts of poor and inappropriate accommodation are linked to poor health, oppression and poor mental health. Addressing the issue of accommodation will take a whole organisational approach by OTM.

Education is another major issue for Travellers. It is clear that children and teenagers in the education system are in need of support with homework and with the transition to secondary school. Adult education and the provision of opportunities for Traveller adults to access adult education, particularly given the closure of the Traveller Training Centre Programme, is very significant for Offaly.

Traveller health is an area that has been given some attention over the past decade, and it is clear that Travellers are beginning to see the benefits of peer-led programmes such as the Primary Health Care Programme. However the Consultation highlighted that much work needs to be done, particularly in the area of mental health and Traveller men's health.

Nine areas were clearly identified and are: Accommodation, Health, Education & Youth, Discrimination, Employment & Enterprise, Culture/Ethnicity, Working in Partnership, Community Development and Organisational Capacity. A number of the Strategic Areas of Work refer to ongoing work/project areas within OTM. Generally, these areas have a member or members of staff assigned to them. A number of other Strategic Areas of Work are new or developing areas of work that do not necessarily have a member or members of staff assigned to them but are considered of sufficient importance to warrant an organisational approach to addressing them.

The Strategic Areas of Work are designed to work to implement the OTM vision and mission, and within the principles and commitments of the organisation as above.

This annual report highlights many of the strategic areas identified in the Strategic Plan, which have underpinned the work delivered in 2013.

Priority Work Areas



National Traveller accommodation protest, Fingal council offices, November 2013

Accommodation

Strategic priority 1.1: 'To achieve culturally appropriate accommodation for Travellers in County Offaly, including better facilities for travelling Travellers'

There is a huge volume of accommodation issues impacting on Travellers across the county, and information and advocacy continues to be a central response for individual families, OTM dealt with over 500 accommodation issues/queries in 2013.

With approximately 36 families in Offaly living on the roadside or on unofficial sites without basic services, and the active intent of local councils to close 3 unofficial sites in Offaly, the formation of the new OTM accommodation working group in 2013 provided a more strategic approach to tackling the growing needs of Travellers within Offaly, including lobbying for local authorities to meet statutory obligations in the provision of Traveller specific accommodation. In September 2013 OTM conducted a county wide accommodation needs assessment with 182 Travellers across Offaly in order to inform the OTM submission on the draft Offaly TAP 2014-2018. Findings included:

- 61.5% of Travellers surveyed said they are not living in accommodation that they want to live in. This includes 88% of those living in private rented accommodation. Of the 38.4% of Travellers who are living in accommodation that they wanted to live in; 57% of these were in caravans on sites .
- 87.3% of Travellers surveyed said they have been affected by the laws that have made it illegal for Travellers to travel freely.
- A majority of Travellers: 91.2%, stated there should be a transient site in each county.
- 95.6% of people surveyed said it was difficult for young Traveller couples looking for accommodation in County Offaly.
- 100% of Travellers surveyed believe that the Offaly Councils could do more to improve the accommodation situation for Travellers in their area.

'When my family were travelling around we were moved around like dogs from place to place, all we got was: you people shouldn't be here, go back to where you came from'

(OTM Accommodation needs assessment 2013)



Thomas McDonagh
Accommodation Worker

PHCP Interventions 2013

1715 interventions with women and 767 interventions with men

78 of which were new clients

998 emotional support interventions

501 advocacy support visits

127 breast screening advice

360 cervical screening advice

1055 dental health promotion interventions

560 smoking cessation interventions

123 bereavement support interventions

277 mental health support interventions

1072 nutritional advice interventions

451 vaccination advice interventions

320 elderly care and support interventions

Referrals:

7 substance misuse referrals were made

127 GP referrals were made

90 dental referrals were made

40 Des PHN referrals were made

21 counselling referrals were made

25 social worker referrals were made

33 domestic violence service referrals were made

21 social welfare referrals were made

29 accommodation service referrals were made

Health

Strategic priority 2.1:

Increase life expectancy for Travellers in County Offaly

PHCP

The work of the Offaly Primary HealthCare Programme commenced in 2003. The work continues to have a Primary Health Care ethos which is rooted in a community development, peer-led model. A partnership approach is taken between OTM and the HSE, and interagency collaboration involving a number of statutory and non-statutory organisations and professionals is utilised.

The peer community health workers are right at the centre of our activities in OTM, providing a range of information, advocacy and networking roles, with the aim of improving the health of Travellers, including access to health services, policy development and lobbying and monitoring on behalf of Travellers. A particularly important role is given to the provision of health promotion, information, support and outreach work with Travellers delivered through community based approaches to health. In 2013, two new peer community health workers were employed, expanding the team to seven. A number of new initiatives were launched in 2013 including the 'Triple P programme' and the OTM social club which aims to create a social space for isolated members of the community.



A session on nutrition as part of the 6 week health & wellbeing course which explored diet, lifestyle, mental & physical health; with each participant designing a personal fitness plan



OTM marking the 16 Days of Action Opposing Violence against Women campaign with a balloon launch outside the OTM offices in November

‘A lot of women worked in them training centres. My daughter did but they said they were all closing down now, sure there will be nothing for women then’

(OTM Community Consultation)

Community Development Health Work

Key areas of work in 2013 included health policy, women’s health, domestic violence, suicide awareness and substance misuse. This role also supported Travellers to participate on various policy structures and co-ordinated the Midland Traveller Women’s Health Network. Over 700 interventions with Traveller women were recorded throughout the year. Some highlights of the work for 2013 include the following:

- Women’s groups set up in Birr and Banagher. Initially walking groups, they were developed into regular monthly health clinics which provide a space for health promotion, linking in with health professionals and also health screenings.
- International Women’s day: as requested by the community, a mass was held to celebrate International women’s day, followed by information on services available for women and discussions around issues facing Traveller women in Offaly.
- World Heart Day: A walk was organised in conjunction with PHCP to create awareness of heart disease and stroke. The event was a great opportunity to show all participants the health benefits of walking.
- Zumba Dance Classes commenced at the end of November. The classes were available to all Traveller women in Banagher. There are a number of benefits of Zumba including improved cardiovascular health, weight loss and positive mental health. The class has also been an opportunity for participants to meet the community development worker, PHCP team and the Mental Health Social Worker at OTM.
- Outreach was undertaken in the community to identify Travellers who experience isolation to participate in a social club. A day trip to Knock shrine for social club members was organised in conjunction with the OTM PHCP and this took place in October 2013. The trip was an opportunity for OTM to have dialogue with the group to find out their interests and how OTM could support the development and sustainability of the group in to the future. A subsequent Christmas Handcrafting Workshop took place in OTM in December. The social club provides a safe space offering friendship, social contact and opportunities for community involvement. Discussions have been facilitated around the introduction of health promotion and potential health screening as an aspect of the group in 2014. The current membership of the social club exceeds 60 members.

The findings from the All Ireland Traveller Health Status Study (2010), state that the life expectancy gap between Traveller men and settled men has widened to 15 years. Traveller men have six times higher suicide rates than the settled population and heart disease and stroke account for 25% of deaths.



The OTM Men's fishing group deep sea fishing off the West coast in September 2013

Traveller Men's Health

2013 was the second year of operation for the Community Development Men's health worker and this aspect of the OTM health work has rapidly become an essential part of the holistic approach taken to health in OTM. Over 300 interventions with Traveller men were recorded throughout the year.

Highlights of 2013 include:

- The re-establishment of the Midlands Traveller Men's Health Network as a vehicle to build capacity and buy in from local Traveller men to become more proactive around health issues facing men and eventually to contribute to decision making structures within the local Traveller Health Unit and other bodies.
- The men's worker utilising the OTM horse project as a vehicle to work with groups of Traveller men on issues around health and mental health (see page 12) including the opportunity to deliver health promotion, introduce health services and professionals to the men, and link participants into the wider programmes within OTM.
- The creation of the OTM men's fishing group, whose participants also completed the Safetalk training on suicide awareness and response.
- Traveller men in Offaly representing OTM at national forums including the ITM 'What do men want' series of network discussions and the Men's development network Ireland.

Strategic priority 2.2:

Improve Traveller mental health and wellbeing

Travelling to Wellbeing

In 2013, mental health social worker Sandra McDonagh joined the OTM team to launch the Travelling to Wellbeing (T2WB) programme. T2WB aims to reduce the stigma around mental health and suicide in the Traveller community through supporting recovery plans/programmes with Travellers experiencing mental health issues and addressing health inequalities by working with Travellers and service providers to deepen mutual understanding, improve referral pathways and aid recovery. Working closely with an initial 19 people in the first year, the programme is off to an exciting start.

Studies show suicide rates among the Traveller community are six times higher than in the settled population, accounting for at least 11% of all deaths. In response to this crisis, a 'Travelling to Wellbeing' seminar exploring mental health and the Traveller community took place at OTM on 20th June 2013. There were 75 people in attendance from across Ireland, of which over half were members of the Traveller community. The mix of Travellers, Travellers organisations and other service providers on the day led to a highly meaningful and productive engagement. OTM made a series of commitments leading on from the seminar:

- To establish a mental health working group to further explore the issues arising from this seminar.
- To develop an integrated mental health strategy to include the T2WB programme, Men's health programme, Primary Healthcare programme for Travellers and Youth Programme.
- To engage in further specialist mental health training in order to build capacity as an organisation.
- To explore ways in which to develop partnership working between Offaly Traveller Movement, the Traveller community and local mental health service providers.



Focus group discussions as part of the OTM Travelling to wellbeing seminar in June 2013

'Respondents spoke frequently of the links between physical and mental ill health and the affects of inappropriate or substandard accommodation, often further compounded by experiences of discrimination and the oppression experienced as a result of the imposition of a way of life that does not suit Travellers'

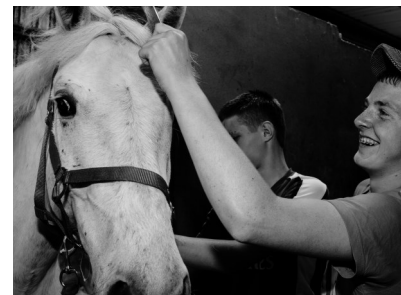
(OTM Community Consultation)

OTM Horse Project

The Offaly Traveller Movement Horse Project was initiated some years ago as a way to target Traveller men who have an interest and passion for horses but are otherwise disengaged with health services. The horse project provides an opportunity for men and boys of all ages, to come together, united through their one passion- the horse. The nature of the experiential learning, through the medium of the horse, involves the learner in practical, 'hands on' tasks and offers a real and uncontrived learning experience. The physical, educational and psychological benefits from working with the horse are myriad, from personal development, relationship building, improved intergenerational communication, to the acquisition of new skills. This combined makes for huge positives in the mental and physical well being of an individual.

Through trust built via the work of the horse groups in Tullamore, Birr and Clara, a number of health services and professionals were introduced to the men involved alongside health promotion sessions and even full health screenings, indicating that contrary to the general consensus, Traveller men will absolutely access health information and services given appropriate opportunities.

In 2013, twenty one members of the Horse Project, most of whom are residents of the halting sites in Tullamore, were awarded a FETAC 3 certificate in Stable and Yard Routine from the Laois Offaly Education and Training Board, ETB. The men's achievement in completing the FETAC program was immense. Their determination and tenacity in tackling work sheets and preparing portfolios was commended by all involved. We hope that this is just the beginning for many of the men and that they will take up the challenge of further programmes in the future.



21 members of the OTM horse project were awarded a FETAC 3 certificate in stable and yard routine in 2013



Award ceremony for the 'start your own business' course with Offaly County Enterprise Board

Enterprise & Training

The OTM Enterprise group was established in late 2012. The group are all local Traveller women who are experienced dress makers/seamstresses and it is their hope that they will establish a business on a chosen niche in the market e.g. making communion dresses/bridesmaid dresses etc. Since the group established they have worked really hard and have received great support from Offaly County Enterprise Board by way of a 'Start Your Own Business' course which they completed in May 2013. They also have a mentor, Phyllida Clarke, who has guided and supported the group from the beginning. In the latter months of 2013 the group also completed a course on pattern design with support from the Laois Offaly Education Training Board ETB.



Making beautiful Christmas crafts for the Tullamore Christmas market, December 2013

Strategic priority

3.1

Travellers have the same education outcomes as their settled counterparts

Strategic priority

3.2

To support Traveller young people to reach their full potential



Top: Children from the School Transfer Programme
Bottom: Team building at the Castle-comer Adventure centre

Youth and Education

In 2013 there were 698 individual youth interventions made, 203 of which were education focused. A wide range of positive work took place through a variety of activities and programmes:

School Transfer Summer Camp

The OTM consultation report 2012 identifies the following: children up to 12 years; Difficult transition from primary to secondary school. In addressing this OTM in conjunction with OLDC delivered a school transfer programme to 6th class Traveller youth from Tullamore from 15th to 19th July 2013. The students took part in a week long programme outlining the differences between primary and secondary school systems, fears, rights and responsibilities, school time tables, drama workshops, games and art, future jobs and ambitions, healthy planned lunches and a day trip to Kinnitty woods for team building and peer support.

Traveller Culture Education Programme

In 2013 OTM piloted a Traveller culture programme in St Brendan's Boys National School in Birr. The programme was once a week for six weeks and the Traveller students in the programme undertook a project which consisted of reading and writing up Traveller stories, making miniature wagons etc. The project was put on display in the school and the students involved presented their Traveller culture to all the students in their school.

OTM Youth Drop-In Club

A weekly social outlet for young Travellers which addresses the following; confidence building, peer support, leader ship skills, awareness raising, information sharing on local events, empowering young Travellers, supporting young Travellers to reach their full potential. The young people themselves choose the activities at the drop in club and in 2013 they included; Clay modelling, glass painting, pool tournament, painting the OTM youth banner, art/ mask painting, health eating, cooking, nail art, make up application, skin care, input from agencies such as OSPCA.

Soccer Tournament 2013

OTM and Offaly Sports Partnership delivered this 6 weeks training on 5 aside soccer, the last night included a tournament competition. The coach was Alan Kavanagh and the winning teams were presented with gold and silver medals. 38 young Traveller men between the ages of 14 and 24 participated.

Hairdressing Programme

In conjunction with Fás hairdressing training centre 7 young Traveller women between the ages of 22 and 24 participated in a hairdressing programme.

Seasonal Events

Other seasonal youth events that took place in 2013 included the St Patricks Day Parade, Easter Egg Hunt, Halloween Ghost Tour to Charleville Castle and the OTM Christmas Disco.



AIT taster session 2013: potential students with Ashling Jackson, Senior Lecturer in Social Care and Ollie Hegarty, Head of Department of Humanities

AIT Taster Day

On the 4th June 2013 OTM brought 21 secondary school students to AIT for a taster day that was designed to introduce third level education to the Traveller students in Offaly. The day consisted of inputs from different departments in the college and students also, the following was some of what was discussed; what is available in Athlone Institute of Technology, coming to college, other things to do in college, sports and recreation, life in college: a student's view. Students also got the opportunity to attend a lecture to see what it's like. We would like to thank AIT, most especially Ashling Jackson (Senior Lecturer in Social Care) for facilitating this important day for us. The students thoroughly enjoyed the experience and left AIT inspired.

Reach a Teacher Programme

In order to address the early school dropout in Offaly and to follow on supporting the students from the School Transfer Programme, OTM with OLDC and Tullamore library put in place the Reach a Teacher Programme throughout 2013 (piloted in 2012). The programme is an online one to one tuition, where each student received tuition/grinds in Maths or science. The students attended once a week after school for one hour. Over the year three blocks consisting of a total of 21 weeks of the grinds was delivered to a group of approximately 12 students. It took place in the Tullamore library.

Additional Summer Events in 2013

- Swimming Lessons Programme, 10 young people aged 10-16 participated
- Day Trips to Dunmore Caves & Castlecomer Discovery Park, 16 young people aged 10 to 14 attended
- Junior Horse Project Trip to Cherry Orchard Equine Education and Training Centre, 22 young people between 10-16 attended

'It helped me with my junior cert and I found it good'

'It was enjoyable and it improved my maths'

'Whatever we were stuck on we got help'

'I enjoyed interacting with someone on line and not face to face'

'I wouldn't change anything because it was brilliant'

(Student comments from the Evaluation Report 2013 on the Reach a Teacher Programme)



OTM Drop in club

'This [discrimination] will never go away. It's everywhere and it happens every day. It is just like the norm now. I don't think it will ever change - if anything it is getting worse'

(OTM Community Consultation)



OTM has mobilised support at a number of direct action events in 2013, including this anti-racism demo outside the Dáil Éireann in November

Discrimination

Strategic priority 4.1

To reduce discrimination, direct and indirect, in County Offaly

2013 has seen a significant strategic push in building the capacity of OTM to respond to the widespread anti-Traveller discrimination experienced across County Offaly, and establishing the OTM anti-discrimination working group has been a central part of this capacity building process.

Joining the European Network Against Racism (ENAR Ireland) and adopting the 'i-reporting' system across the organisation as a means of recording racist incidents against Travellers has also led to an increased awareness and emphasis upon anti-discrimination within the team and importantly within the wider community.

Alongside working locally, OTM has mobilised support at a number of national anti-racism actions, and as members of ENAR Ireland have been in a position to make contributions at a national level as well as keeping linked in with initiatives and developments as they occur.



A traditional tin-smithing display at the Traveller Arts and Crafts exhibition during Traveller pride week 2013

‘The Traveller way of life is changing - it is not dying out. ‘You are what you are’ Settled people and society need to be more aware of Traveller culture’

(OTM Community Consultation)

Culture and Ethnicity

Strategic priority 6.1 To promote Traveller culture in County Offaly

Strategic priority 6.2 To contribute to the achievement of recognition of Travellers as an ethnic group

OTM organised a Traveller Art and Craft exhibition for the annual Traveller Pride week celebrations with assistance from the Offaly Traveller Interagency Group. Crafts that were displayed during the exhibition included tinsmith crafts and traditional Traveller woman’s apron pocket; these crafts were made by the Travellers in Offaly through workshops that were facilitated during the month of June by Tom McDonnell (traditional tinsmith) and Bidy Kavanagh and Lily McDonagh (traditional crafts women). The exhibition also featured traditional handmade arts and crafts on loan from members of the Traveller community in Offaly. The exhibition featured art work from local Traveller artists including the very talented David Brickland. David, with the assistance of the OTM, secured a place on the BA in Art and Design at GMIT Galway. We are immensely proud of David, he is a very talented young Traveller man!

The collection was displayed at the Bridge Shopping Centre, Tullamore in June and on the first day the workshops were live for all to see and learn. The exhibition was then brought to Aras Na Chontae, Tullamore for the month of July. Hundreds of people saw the exhibition and here are just a few of the many comments by visitors in the comments book:

- *‘Excellent craftsmanship on display’*
- *‘Great exhibition, well done!’*
- *‘Great display of talent’*
- *‘Great to see these crafts being promoted in County Offaly’*
- *‘The talent in the Traveller community is truly amazing’*

Staffing

Staff Team of 2013:

No	Name	Position	Profile
1	Emma Gilchreest	Operations Director	Full Time
2	Thomas McDonagh	Community Development Accommodation Worker	Part Time
3	Karen Guilfoyle	Administration Manager	Part Time
4	Bridget McInerney	Administrator	Part Time
5	Carol Abraham	Administrator	Jobsbridge (from Sept 2012)
6	Matt York	Health Co-Ordinator	Part Time
7	Larry Scully	Community Development Mens Health Worker	Part Time
8	Sorcha Lewis	Community Development Health Worker	Part Time
9	Lesley Jones	Horse Project Facilitator	Part Time
10	Mary McInerney	Community Health Worker	Part Time
11	Lily Kavanagh	Community Health Worker	Part Time
12	Pinkie McInerney	Community Health Worker	Part Time
13	Sarah McDonagh	Community Health Worker	Part Time
14	Brigid McInerney	Community Health Worker	Part Time
15	Celine McInerney	Community Health Worker	Part Time
16	Geraldine Ward	Community Health Worker	Part Time
17	Sandra McDonagh	Mental Health Social Worker	Part Time
18	Sarah Joyce O'Brien	Youth Worker	Part Time
19	Noeleen Eustace	Youth Worker	Part Time
20	Elizabeth Doyle	Youth Worker	Part Time
21	Alan Kavanagh	Youth Sports Coach	6 week contract
22	Ciara Quinn	Student Placement Athlone Institute of Technology	Full Time (Sept-Dec)
23	Niamh Condrón	Student Placement Carlow Institute of Technology	Full Time (March-June)
24	Louise Gorman	Student Placement NUI Maynooth	Full Time (Jan-June)

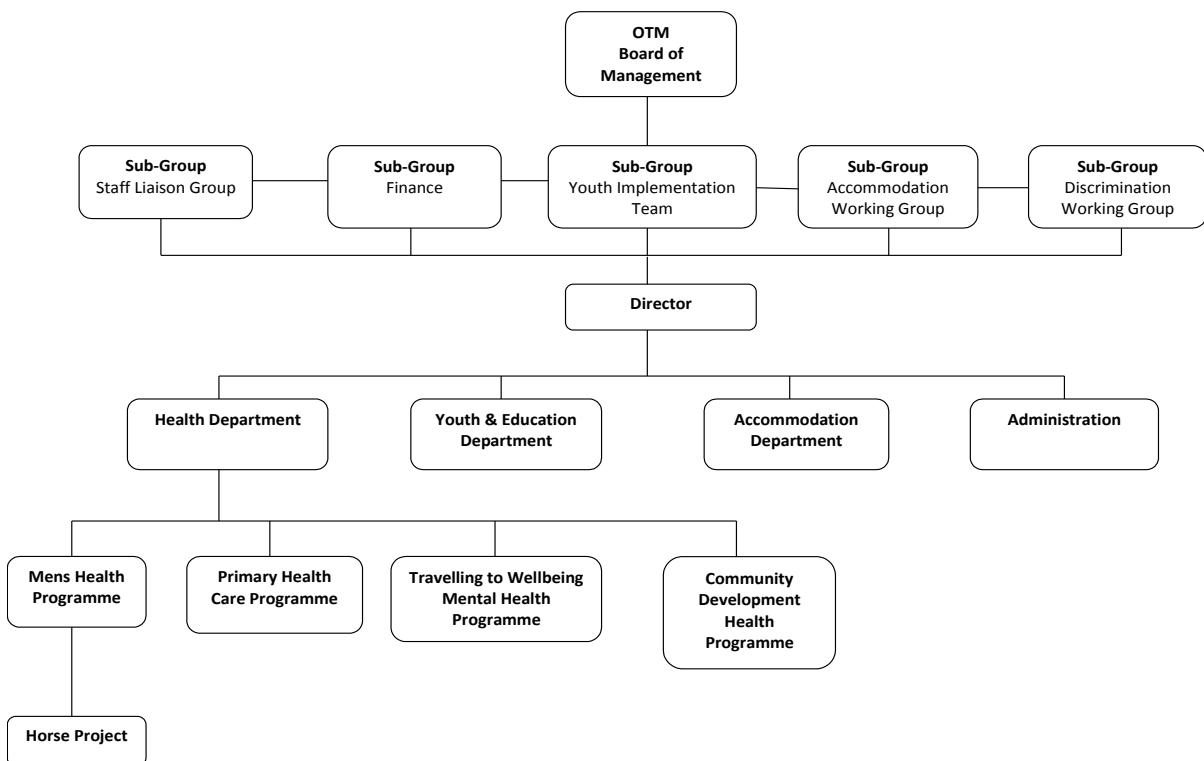
Board of Management

The Board of Management oversees the work programmes, financial management and staff development of the organisation.

Six board meetings took place throughout the year and various sub group meetings. The OTM AGM took place on 25th June 2013, at this meeting the OTM Constitution was updated. Directors and members for 2013 include:

- Maureen Ward – Chair
- Mary Rose Kerrigan – Vice Chair
- Marina O’Malley – Treasurer
- Lilly Ward – Secretary
- Margaret Lovett
- Liam Rodger
- Ellen Teresa Ward

Organisational Chart 2013



Representing and Networking

During 2013 OTM was represented on the following external bodies:

National Traveller Partnership, both as a Board member and on operations committee (NTP)

European Network Against Racism (ENAR)

Local Traveller Accommodation Consultative Committee (LTACC)

Offaly Joint Policing Committee

Irish Traveller Movement Accommodation Sub Group

Offaly Traveller Interagency Group (TIG)

Offaly Social Inclusion Measures (SIM)

Regional Traveller Health Unit and finance sub-committee (THU)

National Traveller Health Network (NTHN)

Offaly Domestic Violence Support Services (ODVSS)

Midlands Regional Drugs Task Force Education and Prevention Sub Committee

Midlands Region Health Network (MHN)

Midlands Regional Mens Network

National Traveller Suicide Awareness Project Steering Group

Travelling to Wellbeing Steering Group

Tullamore School Completion Programme Board of Management

OTM are members of:

National Traveller Partnership

Irish Traveller Movement

European Network Against Racism

European Anti Poverty Network

Community Workers Cooperative

Financial Report

Schedule of Income and Expenditure for the year ended 31 December 2013

	2013	2012
	€	€
Note 1: Income		
Community Development Program	84,550	92,857
Department of Children and Youth Affairs - SPY	43,894	48,771
NTSAP	2,793	4,000
Health Service Executive	200,596	226,000
Genio	5,245	4,750
Once off Funding		
OTM Calender	400	925
Horse Calendar Project	-	1,062
Maynooth NUI Student Placement	200	-
SPY Sundry Income	123	993
Traveller Pride Week	2,243	1,097
Redundancy Rebate	-	4,480
HSE Horse Project 2011	-	6,060
ESB Electric Aid	5,000	-
Offaly VEC	500	-
OLDC	2,568	-
Credit Union	300	-
Sundry Income	1,153	334
	<u>349,565</u>	<u>391,329</u>

		31 December 2013		31 December 2012	
	Notes	€	€	€	€
Income	1		349,565		391,329
Expenditure					
Community Development Programme	2	84,914		93,803	
Department of Children and Youth Affairs - SPY	3	44,869		49,000	
NATC	4	-		(58)	
Health Service Executive	5	236,058		204,530	
After School Programme	6	-		950	
General Expenses	7	324		19,205	
Move Budget	8	1,783		3,437	
Interagency T.Pride	9	2,243		778	
NTSAP	10	6,199		900	
ITM	11	-		178	
Genio	12	9,574		1,477	
Laois Calender Project	13	-		1,622	
OTM Calender Project	14	1,217		200	
OLDC Enterprise Group Grant	15	483		-	
Electric Aid Horse Project	16	4,946		-	
OLDC TP Week Grant	17	468		-	
OLDC H.P Grant	18	1,054		-	
VEC H.P Grant	19	393		-	
Student Expenses	20	197		-	
St Patricks Day Expenditure	21	100		-	
Tullamore Credit Union Grant	22	300		-	
			395,122		376,022
Surplus/ (Deficit) for the year			<u>(45,557)</u>		<u>15,307</u>

